

# **New Eltham Methodist Church & Community Centre**



**September and October 2017**



## **Prayer is the start of activism**

The last month has been fraught with terrible events. We have seen the horrible civil disturbance taking place in Charlottesville in USA, and terror attacks in Spain and Finland. For some people, this is a sign of end times, a sign that we need to put up the defences and batten down the hatches. For some, it signals a need for isolation from 'other' people, those who are different to us.

I would like to suggest that the only successful way of dealing with these issues is to allow yourself to be vulnerable. I'm not saying that we should all go out and deliberately put ourselves in the way of potential harm. I am saying that we should not avoid contact with others, not avoid going out to London or other places.

However, I can't help but think that more is required than simply making up your mind not to be scared. After the events in Charlottesville, I watched the responses from many of my Clergy colleagues in America. There were the expected responses of shock and horror at the violence and hatred. But there was another response too - they marched. Many clergy travelled to Charlottesville to take part in the protests against the violence and hatred expressed by the Neo-Nazi, KKK and White Supremacist movements. They made themselves vulnerable. They literally put themselves in the frontline of events, despite their fears and reservations, because they believed that activism was the only response that could bring a change.

At the heart of it, the Gospel of Jesus requires us to become vulnerable. It requires us to trust in a God we do not see with our eyes, it requires us to trust in the power of love (both divine and human), it requires us to love our enemy and pray for them, it requires us to be peacemakers, not just peace-speakers. All of these requirements put us in a place of vulnerability, but God's purpose is not that we become weak or damaged, but that we become strong. It is in the discovery of God's presence with and within us as we become voluntarily vulnerable, that we gain strength of faith. My Clergy colleagues stood up for righteousness and love and they went through times of great personal fear in order to do this. The end result was a strong, inter-denominational witness to the love of God for all people. It affirmed for those who were being persecuted, that they had value as people. It held the cross in the face of those who were holding burning crosses and declared to them that they had (excuse the pun) the wrong end of the stick.

It is through voluntary vulnerability that we will find our strength. We do this already - each time we embark on a human relationship, we make ourselves vulnerable to hurt and pain, but also open to love and growth. The journey of vulnerability is not an easy journey at all, but one that is most likely to reveal to us the presence of the living and present God. Shalom, Duncan.

## 90<sup>th</sup> Birthday Celebration

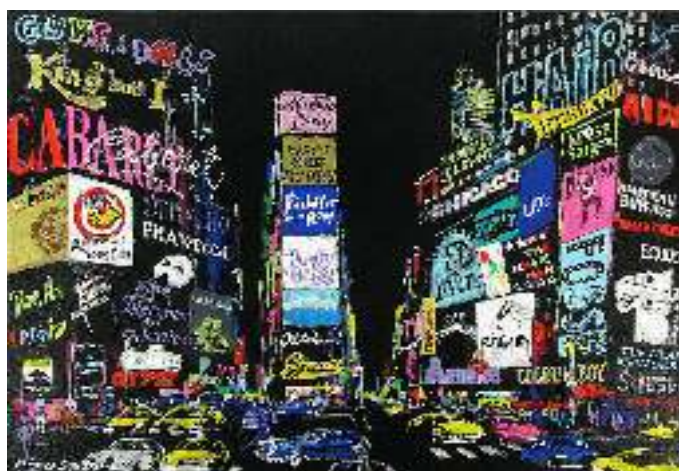
Edith Warner and family would like to welcome you to coffee, tea and cakes to celebrate her 90<sup>th</sup> birthday in Room 4 on Sunday 3<sup>rd</sup> September following the morning Service. All welcome.

---



Erith Operatic Society presents

# Showtime



At New Eltham Methodist Church,  
Footscray Road, SE9 3UL

On Sunday 17<sup>th</sup> September, 2017 at 6pm

Join us for a selection from popular musicals and operetta, including Les Miserables, Disney's Aladdin, Jungle Book and Lion King, Phantom of the Opera and Chess, as well as 'Antonio' the 5 minute opera; and sing along to your favourites from Rogers and Hammerstein and other American blockbusters

**Tickets £6**

(on the door, in Church or call Graham on 07810 201818)

All proceeds to be divided between EOS and the Church

## **New Eltham Festival**

**Saturday 16th September 10 am to 3 pm**

The third New Eltham Business Association (N.E.B.A) Festival is on Saturday 16<sup>th</sup> September. There will again be a performance area where entertainment will be provided throughout the day including NECP and All the Arts who meet here on our premises. There will also be a number of stalls at the festival. Do come along and support our local community.

---

## **MacMillan Coffee Morning**

I will be holding a coffee morning in aid of Macmillan Cancer Support on Friday 29th September from 11am to 1pm, at 57 Blanmerle Road, New Eltham, SE9 2DX. Please come along and support this worthy cause, while enjoying a piece of cake!  
Louise Field.



### **Training Session - 'Creating a Safer Space'**

A training session for the Circuit will be held at Chislehurst Methodist Church on Wednesday 20th September, meeting at 7.30 pm for coffee/biscuits with the session starting at 8.00 pm prompt. The session will be led by the Reverend David Gillman and Janet Haley, the District Safeguarding Officer. Our own Safeguarding Officer, Wendy Preston, will also be in attendance. If you work with children or vulnerable adults in the Church you must attend this training.

The focus of the training is to promote awareness of possible safeguarding concerns and look at our responsibilities as a Church. We will also be looking at some scenarios through group discussion.

Please inform Jane in the Church office or let Wendy know if you will be attending. Thank you.





# Film Nights

@

New Eltham Methodist Church

Well we are up and running and the first three films nights have taken place. Around 12-15 people have attended and we enjoyed watching the films and having some healthy discussions afterwards along with refreshments. The films are on a variety of topics; some with thought provoking or challenging issues, some humorous, some dealing with tragic issues – so there will something for everyone's tastes. For those who have difficulty with hearing, special speakers have now been set up and subtitles are used when they are available.

Film nights are open to all adults/young people over 15 on a walk in basis – just turn up on the night!

Our next scheduled films are Philomena on Wednesday 13<sup>th</sup> September and The Fifth Element on Wednesday 11<sup>th</sup> October.

# Film Night

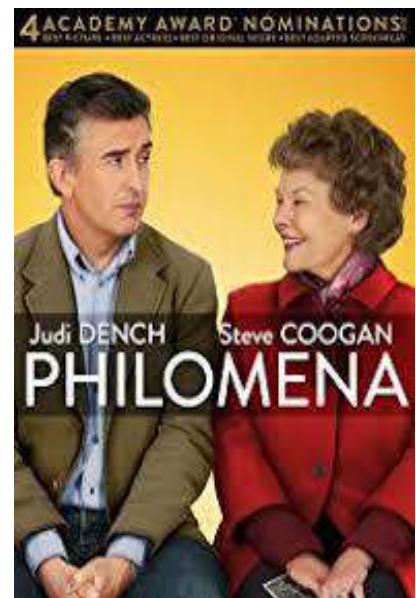


@

New Eltham Methodist Church

**Wednesday 13<sup>th</sup> September at 7.00 pm**

**Philomena** is based on the book *The Lost Child of Philomena Lee* by journalist Martin Sixsmith and deals with the scandal of the catholic adoption scheme in Ireland and the Magdalene Sisters homes, which took babies from unmarried young mothers who had children and sent them to the USA for adoption. Starring Judi Dench and Steve Coogan, it tells the true story of Philomena Lee's 50-year search for her son and Sixsmith's efforts to help her find him.



All welcome to come along and enjoy the film. Which will be followed by a short discussion and light refreshments.



The film is free but there will be a small charge of £1 for refreshments. Bring a friend!



# Film Night



@

New Eltham Methodist Church

**Wednesday 11<sup>th</sup> October at 7.00 pm**

**The Fifth Element.** A sci-fi film telling the story of a race to save the 23rd century world from the Great Evil, which visits the earth every 5000 years. The only thing that can ward off the destruction and save humankind is a machine created from 4 elemental stones of earth, fire, air and water, channelled through the fifth element, which is a perfect being. Starring Milla Jovovich as Leeloo, the incarnation of the 5th element, Bruce Willis as Korban, an ex elite military man turned taxi driver who takes up the battle with her and Gary Oldman as the archetypal baddie Zorg, chaos ensues as they battle to save the planet – but as Leloo finds out about the kind of place the world has become does she want to save it?



All welcome to come along and enjoy the film which will be followed by a short discussion and light refreshments. The film is free but there will be a small charge of £1 for refreshments. Bring a friend!





# Children's Film Club



On Saturday 7<sup>th</sup> October we will be showing Disney's live action adaptation of "Beauty and the Beast" starring Emma Watson, as the first film in our new Childrens Film club, which will be held once a month throughout the Autumn/Winter in Church, from 3pm.

The Club is for Children and Families, so all children must be accompanied by a responsible adult. The Film itself is free, and Refreshments will be available for a small charge.

This film club is another initiative of the Impact Group, but unlike the Wednesday film nights, it will not have any spiritual or discussion focus. It is purely to help families feel comfortable in church.

For more information please speak to Louise or Christopher Field.





## NEW ELTHAM METHODIST CHURCH

Footscray Road, New Eltham, SE9 3UL



ALL  
FAMILIES  
WELCOME

Saturday 30<sup>th</sup> September, 4-6 pm

Join us to make some fun 'Harvest' crafts!

For further information please email:  
[church@newelthammethodist.co.uk](mailto:church@newelthammethodist.co.uk) or telephone 020 8859 4932

**FREE ENTRY**

Messy Church is supported by New Eltham Methodist Church although any donations on the door are gratefully received to support our craft activities.

# Our Annual Good Cause 2017/18

## Whitechapel Mission



As many of you will know each year as a church family we choose a charity that we will support for the next 12 months. We support by raising funds through a variety of different fund raising activities. This year's charity will be Whitechapel Mission

The following information is from The Whitechapel Mission website.

### About The Whitechapel Mission

The Whitechapel Mission has been helping Londoners to help the homeless since 1876, meeting the specific needs of each man and woman who walks through their doors.

They are volunteer led with very few staff, but this does not mean they are a small organization.

- They see as many as 300 people a day, looking for assistance.
- They see as many, if not more than the other day centres in London.
- Their impact is as high, if not higher than other day centres.
- They do this for a fraction of the cost of other day centres.
- They do this without any statutory funding.
- They do this without spending a penny of the donations on fundraising or administration.
- They recognize the true strength of their volunteers.
- They recognize the value of everybody coming through their doors.

First, we help the homeless by meeting immediate needs: food, shelter, clothing, and medical care. In our recovery programs, we address deeper needs for life-skills and job skills training, and addiction recovery. We measure our progress against four criteria, which indicate to us that a life has been transformed from homelessness to hope: connection to family, commitment to sobriety, a job and a place to live, and a plan for the future.

Today, The Whitechapel Mission is a results-oriented organization that is recognized as one of London's most effective.

### Our Purpose

The Whitechapel Mission is called to serve the men and women caught in the cycles of poverty, hopelessness and dependencies of many kinds, and to see their lives transformed to hope, joy and lasting productivity.

### Our Goal

To be the most effective provider of compassionate care and life transformation for hurting people in London. We promote the concept of being part of the Mission and taking ownership of the Mission. Any and all who come are welcome. The services we offer are built upon trust and belonging. We are an inclusion centre rather than an exclusion centre.



## **Sunday 8<sup>th</sup> October 2017**

Our first event to support the Whitechapel Mission will be our Harvest Lunch which will take place on Sunday 8<sup>th</sup> October 2017 at approx. 12.30 pm - following on from the morning service. Tickets for the Harvest Lunch will shortly be available from committee members (Geraldine, Paul and Clare) priced at £5 for adults and £2.00 for children. Contributions of food towards the lunch will be greatly appreciated and a food list to sign up with offers of donations will in the coffee bar.

We will be joined by a guest speaker from the Whitechapel Mission at our lunch who will also be able to tell us more about the work of the Whitechapel Mission and take your questions.

We do hope that you will be able to keep Sunday 8 October 2017 free and that you will be able to join us.

We look forward to seeing you there. Events / Charities Committee.

---

## **Circuit Conference Saturday 14<sup>th</sup> October**

The Circuit Conference is to be held at Chislehurst Methodist Church on Saturday morning October the 14<sup>th</sup>. It will finish in time for lunch. The conference is called 'Shape- Strengthen and Sustain' and the aim is to involve EVERYONE in setting the Circuit and all its churches on the right path for 2018. It will be a time for sharing, reflection and prayer. We shall finish with a service of Holy Communion.

Everyone is invited and encouraged to come. It will certainly be an uplifting occasion with great fellowship. Please BOOK THE DATE NOW! More details to follow soon.

# Operation Christmas Child 2017

If you haven't done your own box before, please consider it. Those who have done so know that is a joy filling a box for a specific child and it is a lovely way of spreading God's love and the gospel. The number of boxes sent from individuals in our church has dropped over the years, but if you are able to make up your own box, I thoroughly recommend it.

Please give me your completed boxes by Sunday 12th November and individual items before this date.

Remember not to include any of these banned contents:

- X NO Liquids - not even bubbles.
- X NO war toys.
- X NO mirrors or breakable items.
- X NO chocolate (due to import regulations) and I would say No nuts.
- X NO food other than sweets
- X NO books with mainly words.
- X NO religious items at all (for these boxes go to needy children across the world, regardless of religion).
- X NO toys without the 'CE' label.
- X NO clothing other than gloves, scarves and hats.
- X NO PLAYING CARDS

## Please note the increased cost this year

### For each box we will need £5.00 postage.



If you are contributing to the boxes that we as a church make up then:

-

Now is the time to give me your items.

Please put your items in the box in the vestibule.

We need:

- ✓ Empty shoeboxes (if the lid and base are wrapped separately in Christmas wrap 1st, even better!)
- ✓ Sweets with a long date, to at least March 2018. (Remember No chocolate)
- ✓ Soft toys with the CE mark, that fit in a shoe box.
- ✓ Stationery.
- ✓ Costume jewellery and hair bunches.
- ✓ "Doing" toys, i.e. tennis ball, skipping rope.
- ✓ Toiletries – ("dry") i.e. wrapped soaps, toothbrushes and pastes, flannel, bath puff.
- ✓ MONEY – we need money to fill but especially to send these boxes to the needy children in Eastern Europe, Africa and beyond who probably have never received a Christmas present before. These children suffer because of war, poverty, natural disaster or illness but being sent a shoebox filled with love and gifts is a wonderful way to share God's love at Christmas, and is a practical reminder that someone cares about them.

So, Get involved in this year's Operation Christmas Child campaign. Start collecting, and look out for leaflets that will be available from the vestibule in September. For more information or to offer help please phone 02088596249.

Thank you  
Louise Field.





### **Wedding bells at NEMC!**

Dear All

Thank you for your prayers and blessings on our wedding day, it was a joyous event and for those who were able to join us on the day, we were blessed by your presence. Sheila's dad singing 'Here comes the bride' was the perfect prelude to the ceremony!

We would like to thank David for his time and his loving and inclusive style that had the children participating prior to the exchange of rings. We all enjoyed our guitar strumming pastor!

A special thanks to Pauline for organising and arranging the pot plants in the church, so kindly and generously, provided by Sheila, Wendy and Sue among others. Also, for giving of her time to become registered so that we could be married at this church.

We extend to the music maestro, Graham, an appreciation for the smooth transition of music.

|

A special word of gratitude to Jane, who provided co-ordination and did so much for us without us having even met her.

We are further, grateful to Eric and Sheila for allowing us to use their beautiful garden as a backdrop to our wedding photos.

Lastly, to those who provided prayers and love without mention we thank God for you.

We ask that you continue to keep us in your prayers and trust that we will be able to continue to share in fellowship with our Lord whenever the opportunity arises.

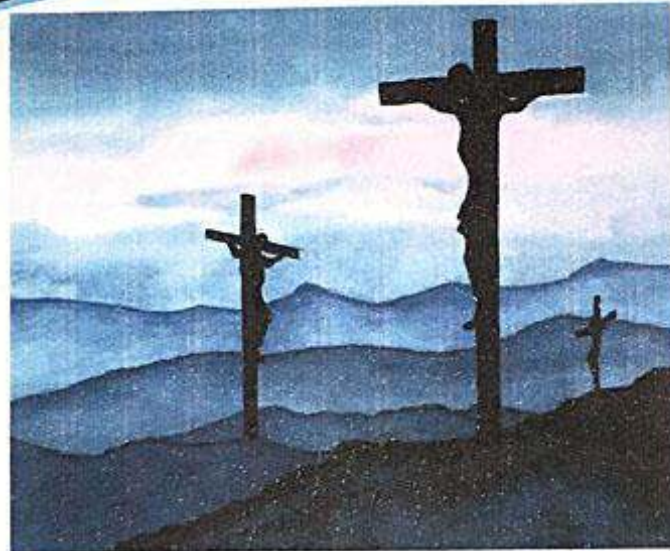
Hugs and love.

Take care and God bless  
Andrew and Claire Rowlands.





# **THE BEST OF THEY ALSO KNEW JESUS**



**A SERIES OF MONOLOGUES & DUOLOGUES  
WRITTEN AND SET TO MUSIC BY  
TONY WRIGHT**

**with LIGHTING BY MICHAEL CHUTER  
and SOUND BY GRAHAM BUNCE  
PRESENTED BY THE CONGREGATION &  
FRIENDS**

**OF NEW ELTHAM METHODIST CHURCH ON  
SUNDAY 15TH OCTOBER 2017**

**AT**

**6.00 pm**



New Eltham Community Productions proudly presents 'Blackadder' - three episodes from three different series from three different eras...with three different Blackadders! From the popular BBC Series 'Blackadder' our show tells the tale of Blackadder through the ages.

Alongside his ever faithful servant Baldrick (and surrounded by colourful characters) he always manages to get into some sort of trouble, whether it's sailing around the treacherous Cape of Good Hope where his choice of sea captain leaves a lot to be desired, finding the Prince a suitable (rich) bride or trying to save himself from the firing squad. How will they get out of this one? Someone has a cunning plan.....Featuring episodes "Potato", "Amy and Amiability" and "Corporal Punishment" this is a show definitely not to be missed! To book your tickets just ring Vanessa on 020 8850 2960 or speak to any member of the group.

We hope to hold a fundraising raffle at each performance in aid of The Whitechapel Mission, this year's Annual Good Cause - any suitable prizes would be most gratefully received, just give to any member of the group or to Jane in the office, or leave in the end cupboard in Room 4 - many thanks!

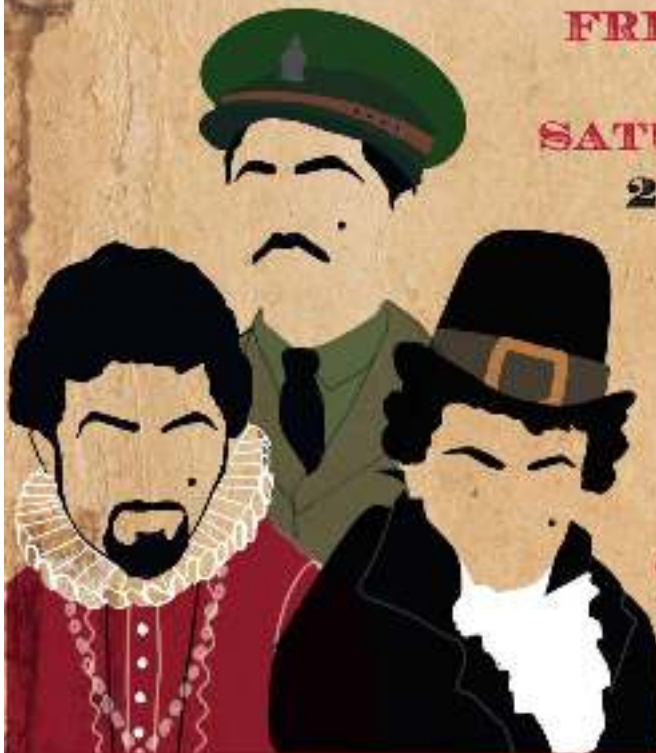


NEW ELTHAM COMMUNITY PRODUCTIONS PROUDLY PRESENTS:

# BLACK ADDER

THROUGH THE AGES

THREE GENERATIONS OF BLACKADDER



**FRIDAY 20<sup>TH</sup> OCTOBER**

**7:30 PM**

**SATURDAY 21<sup>ST</sup> OCTOBER**

**2:30 PM & 7:30 PM**

**TICKETS: £10**

**CALL: (020) 8850 2960**

**BOOK ONLINE**

**VIA [WWW.NECP.ORG.UK](http://WWW.NECP.ORG.UK)**

(BOOKING FEE APPLIES)

**GROUP DISCOUNTS AVAILABLE**

✉ [NECPNEWELTHAM@YAHOO.CO.UK](mailto:NECPNEWELTHAM@YAHOO.CO.UK)

🐦 [#NECPNEWELTHAM](https://twitter.com/NECPNEWELTHAM)

📘 [FACEBOOK.COM/NECPNEWELTHAM](https://facebook.com/NECPNEWELTHAM)



THE CENTRE, NEW ELTHAM METHODIST CHURCH,  
435-439 FOOTSCRAY ROAD, SE9 3JL

An amateur production adapted from the BBC TV series written by Richard Curtis and Ben Elton, original production company Tiger Aspect Productions.



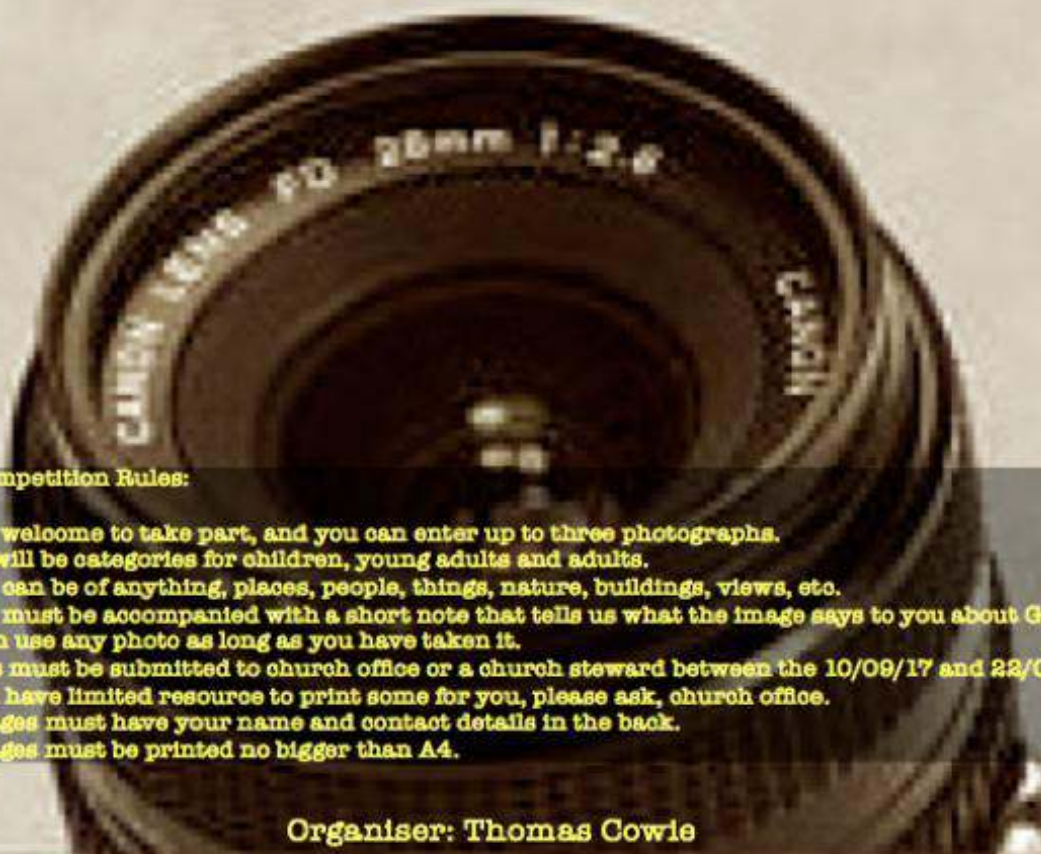
# Photography Competition

On the 24th of September 2017  
We will be having a photography display and competition.  
At Chislehurst Methodist Church, following the service.

This will be between 11:30 and 13:00  
Judging at 12:30

There will be a bring and share tea  
(please bring sweet or savoury snacks to share)

The theme for the competition is God's world



## Photo competition Rules:

- 1 All are welcome to take part, and you can enter up to three photographs.
- 2 There will be categories for children, young adults and adults.
- 3 Photos can be of anything, places, people, things, nature, buildings, views, etc.
- 4 Photos must be accompanied with a short note that tells us what the image says to you about God's world.
- 5 You can use any photo as long as you have taken it.
- 6 Entries must be submitted to church office or a church steward between the 10/09/17 and 22/09/17.
- 7 We will have limited resource to print some for you, please ask, church office.
- 8 All images must have your name and contact details in the back.
- 9 All images must be printed no bigger than A4.

Organiser: Thomas Cowie



## **NEMC Jigsaw Afternoon**

Starting in Mid-September, Graham has obtained some new Jigsaw Puzzles to be put together on an afternoon over several weeks. This is a social gathering with tea and biscuits supplied in Room 1, as it is a bright room with natural light from above.

Puzzles can be put together by yourself or with others. No rules are in force, except we wish not biting, scratching or fighting on the premises!

The suggestion is to hold the meetings from 2.00 till 4.00, but a day is yet to be fixed. (Tuesday and Thursday are already counted out). Which day/s would you prefer?

If you are interested, please let Jane Cowie or Graham Milne know, and check the notices for a start date.



## **Mr. Tumble comes to New Eltham.....**

But no-one must know!!

New Eltham Methodist Centre goes National!!

Mr. Tumble arrived on a bright July Tuesday morning at about 6.50 am, with the production crew coming half an hour later. They are completing an 8 week campaign for the next in his series of highlighting special children and their hobbies for CBBC TV to be shown later this year. I cannot say what happened but can say how the day went.....

Having unloaded their equipment (The usual, ironing board and iron, make-up case and mirror, changes of outfit and, of course, all the lights and cameras) they set up camp in the back rooms and Main Hall before someone found the kitchen and made the essential mugs of tea!

We helped find some items from our stores, to help with the props and backdrops on (and in front of) our stage. The scene set, so the rehearsals began before two girls arrived (with their Mums) at 10.30 am. More rehearsals. Sandwiches all round. Some filming started. More rehearsals. More filming. The girls were finished at about 4.00 pm, but more had to be filmed to tidy the programme up.

At 5.00 pm they called it a day (after a group of children had a photo call) and were clear to go to Canterbury for the next days filming shortly after 6.00 pm.

A long day for a short programme, but that is Children's Television for you! When we get told of the date it 'goes out on CBeebies' we will let everyone know. But don't blink, or you may miss Mavis and Graham towards the end! Maybe I have said too much!

## Regular Events

			CONTACT NOs.
<b>Sunday</b>	10:30	Morning Service Young Church (5-18 years)	020 8857 3786 020 8859 9750
	12:30	British Zimbabwean Methodist Church	07867 525715
<b>Monday</b>	10:00	Diddi Dance (2-4 years)	07803 531782
	19:30	Senior Youth Club (11-19 years) (call Mon 6.30-9.00 pm)	020 8859 4932
<b>Tuesday</b>	09:30	Bumps and Babies (new and expectant mums)	020 8859 4932
	14:00	Adult Social and Activity Group	020 8302 6829
	16:00	Tanya Dirrane School of Irish Dancing (over 4s)	07775 943723
	16:45	Loopy Lou's Cheerleading/Hip Hop/ Street Dance (4-7 years)	07967 346797
	18:00	Loopy Lou's Cheerleading/Hip Hop/ Street Dance (8 years +)	07967 346797
	20:00	Loopy Lou's Adult Funky Fitness	07967 346797
	20:00	Yoga Lily	07776 205301
	20:00	New Eltham Community Productions	020 8300 9027
<b>Wednesday</b>	07:00	Weight Watchers	07880 617066
	14:00	Badminton	020 8850 7621
	17:30	3 <sup>rd</sup> New Eltham Rainbows	020 8300 9027
	18:00	2 <sup>nd</sup> New Eltham Brownies	01322 401 891
	19:30	2 <sup>nd</sup> New Eltham Guides	020 8850 2346
	20:00	Zumba	07811 823467
<b>Thursday</b>	14:00	Sidcup Active Retirement Association (3 <sup>rd</sup> Thursday of the month)	07738 947860
	18:00	Key to Success 11+ Tutoring	07896 114044
	20:00	Badminton	020 8859 5856
	20:00	New Eltham Community Productions	020 8300 9027
<b>Friday</b>	14:00	Sidcup Active Retirement Association	020 8302 7182
	16:15	All the Arts Theatre School (3-17 years)	020 8850 2384
<b>Saturday</b>	08:30	Weight Watchers	07880 617066
	10:00	All the Arts Performers Academy	020 8850 2384

For further details see our website: [www.newelthammethodist.org.uk](http://www.newelthammethodist.org.uk)

## September/October Church Services

### September:

<b>Sun 3<sup>rd</sup></b>	<b>10.30</b> <b>12.30</b>	<b>Mrs Susan Cope</b> Zimbabwean Fellowship
<b>Sun 10<sup>th</sup></b>	<b>10.30</b> <b>12.30</b>	<b>Mrs Julie Gardner</b> <i>(Young Church recommences)</i> Zimbabwean Fellowship
<b>Sun 17<sup>th</sup></b>	<b>10.30</b> <b>12.30</b>	<b>Rev Duncan MacBean, All Age &amp; Baptism</b> Zimbabwean Fellowship
<b>Sun 24<sup>th</sup></b>	<b>10.30</b> <b>12.30</b>	<b>Rev Duncan MacBean, Holy Communion</b> Zimbabwean Fellowship
<b>Sat 30<sup>th</sup></b>	<b>16.00</b>	Messy Church "Harvest"

### October:

<b>Sun 1<sup>st</sup></b>	<b>10.30</b> <b>12.30</b>	<b>Maureen Spinks</b> Zimbabwean Fellowship
<b>Sun 8<sup>th</sup></b>	<b>10.30</b> <b>12.30</b>	<b>Rev Duncan MacBean, Harvest, All Age</b> Harvest Lunch
<b>Sun 15<sup>th</sup></b>	<b>10.30</b> <b>12.30</b> <b>18.00</b>	<b>Mrs Joan Mayes</b> Zimbabwean Fellowship The best of 'They also knew Jesus'
<b>Sun 22<sup>nd</sup></b>	<b>10.30</b> <b>12.30</b>	<b>Rev Duncan MacBean, Holy Communion</b> Zimbabwean Fellowship
<b>Sun 29<sup>th</sup></b>	<b>10.30</b> <b>12.30</b> <b>18.00</b>	<b>Worship Leaders</b> Zimbabwean Fellowship Worship Leaders 'All Soul's' Service

The November/December magazine editor is Michael Chuter.  
Items for insertion to Michael by Sunday 22<sup>nd</sup> October at the latest please.  
**mchuter@btinternet.com**

Thank you.





Front page and this photo of Stained Glass Windows in Dornoch Cathedral, Scotland