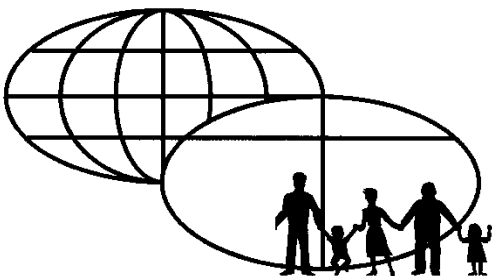


Spring 2018



New Eltham Methodist Church

www.newelthammethodist.org.uk





Worship Calendar for April/May 2018

1 st April	10:30am	Susan Cope
	12:30pm	Zimbabwe Methodist Fellowship
8 th April	All Age Worship	
	10:30am	Maureen Spinks
	12:30pm	Zimbabwe Methodist Fellowship
15 th April	10:30am	John Sennett
	12:30pm	Zimbabwe Methodist Fellowship
22 nd April	Holy Communion	
	10:30am	Duncan MacBean
	12:30pm	Zimbabwe Methodist Fellowship
29 th April	10:30am	Ralph Brandhorst
	12:30pm	Zimbabwe Methodist Fellowship
	18:00pm	Worship Leaders
6 th May	10:30am	Julie Gardner
	12:30pm	Zimbabwe Methodist Fellowship
13 th May	All Age Worship	
	10:30am	Duncan MacBean
	12:30pm	Zimbabwe Methodist Fellowship
20 th May	10:30am	Joan Mayes
	12:30pm	Zimbabwe Methodist Fellowship
27 th May	Holy Communion	
	10:30am	Duncan MacBean
	12:30pm	Zimbabwe Methodist Fellowship



April fool

I am all too aware that, this year, Easter Sunday falls on 1st April. I have no doubt that there will be comedians, both amateurs and professional, who will make something of this. It wouldn't be the first time someone has called Christians fools for believing in the resurrection of Jesus. It has been both the core of our faith and the point of greatest contention for the past two millennia.

It is a compelling idea, that of resurrection. It invites us to consider that our temporal death is not final, but a gateway to something else. It is easy to see why the idea has fascinated people for so long and also why it is so contentious. The first thing to acknowledge is that it makes no real sense. One can explain it theologically, but that doesn't satisfy the modern desire for quantified explanations.

I recently went to Geneva for a couple of days to see the 88th Salon de Automobile (a very big car show). It was a very pleasant break from my everyday work and, as part of the trip, my friends and I went to CERN (the site of the Large Hadron Collider) for a couple of tours. As part of these tours, I watched some videos on anti-matter, dark matter and gravity, all of which is being investigated through experiments involving the LHC. One of the experiments is designed to prove the existence of other dimensions. I can't help but feel that this brings us closer to explaining resurrection than ever before. I believe that we need to stop seeing ourselves as 'finite' beings while, at the same time, declaring God to be infinite. We might then be better able to embrace the possibility that we have an infinite aspect to our nature, for we are created in the image of the infinite God. It is only our lack of imagination that limits us to the dimensions that we can see.

St. Paul writes that:

"If you think you are wise by this world's standards, you need to become a fool to be truly wise. For the wisdom of this world is foolishness to God."

As the Scriptures say,

*“He traps the wise
in the snare of their own cleverness.”*

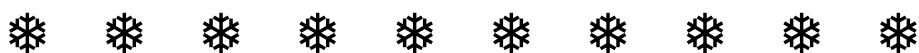
And again,

*“The Lord knows the thoughts of the wise;
he knows they are worthless.”* (1 Corinthians 3:18b-20)

This quote may appear to contradict what I am saying, but it highlights the fact that, for as long as the Church has been around, people have been debating the relative merits of the precepts of our faith. Call it foolishness if you will, but I think resurrection is a good word to use to describe the dimension of our being that we cannot see and which we struggle to grasp intellectually.

It is an act of imagination and faith that lifts our eyes to heaven, and an act of foolishness in the eyes of the world that causes us to say “Christ is risen; He is risen indeed”. One day, I think, we may have scientific facts to support this declaration. Until then, we will continue to declare our faith in the infinite, living, life-giving, eternal, multi-dimensional, almighty, Triune God of resurrection.

Shalom,
Duncan



WANTED

One enthusiastic person to spend one hour a week (term time only) with a lively and fun group of 5-7 year olds, keen on playing games, making stuff, finding out about themselves and others, earning badges and eating cake! After 10 fun-filled and highly rewarding years working with some super 5 year olds, Geraldine is retiring as Unit Leader for 3rd New Eltham Rainbows and would love to find someone to take over from September and keep the unit going. Lots of resources available, plus hands on help to get you started.

Ring 020 8300 9027 to find out more and Neev, Anoushka, Katie, Rosie, 'Bella, Evie and Lily will be so happy to welcome you to Rainbows.



Events/Charities News



GOOD CAUSES

Since September we have been raising funds for Whitechapel Mission, this year's Annual Good Cause, a charity supporting the homeless. Here is an update on how we are doing:

- 8th October 2017 - Harvest Lunch raised £604
- 18th November 2017 - Church Bazaar Sybil/Judith food stall raised £257
- 18th November 2016 - NECP Quiz Night raised £40
- 6th, 12th, 13th January 2018 - NECP Pantomime raffles raised £500
- **Total £1401**

We have received a letter from Whitechapel Mission thanking us for our donations to date (see attached)

In addition to the above the following funds have been raised:

- 12th November 2017 - PSA Remembrance Sunday Concert £213 (organised by Graham Bunce)
- 18th November 2017 - Christmas Bazaar (for Church Funds) £776

Thank you to everyone for supporting our fundraising efforts.

Events and Charities Committee
(Clare, Paul, Geraldine)



**Save the Date for
our Summer Fiesta!**

Saturday 21st July 2018 from 3pm to 8pm

The Events/Charities Committee invite you to our "Summer Fiesta!" to include a Beetle Drive, a Bake Off competition, a BBQ and lots of children's and adult's fun and games, all in aid of our Annual Good Cause Whitechapel Mission. More details available soon. Save the date now!!



The Methodist Church

WHITECHAPEL MISSION

(Founded by David Thomas Jackson, 1830)

212, Whitechapel Road, London, E1 1BJ

(Tel: 020 7247 8280) (Fax: 020 7392 2707)

www.whitechapel.org.uk

Registered Charity No: 227905



13 February 2018

Christopher Field
57 Blenheim Road
New Etnam
SE9 2DX

Dear Chris,

Thank you for your donation of £1,716.90 in support of our work amongst people who have the misfortune to be homeless. Please convey to the members of New Etnam Methodist Church our sincere thanks and gratitude.

Supporting our clients takes many forms; from simply providing a hot meal and a sympathetic ear, to the task of helping an individual to gain the skills and confidence necessary to prepare them to sustain a tenancy and regain their rightful place in the community.

That in a few words is the philosophy of our mission here at Whitechapel. Easy to say or write but extremely difficult to achieve, bearing in mind the problems many of our clients must contend with.

We open our doors every day of the year at 6.00 a.m., when there is always a queue of people waiting. It is to continue this work that your money will be used.

Your support is particularly welcome now and in the future as we strive to meet the constant increase in demand for the services, simple and specialised, we provide in your name.

Thank you for being our partner in this work.

With grateful thanks,

Tony Miller MBE
On behalf of The Whitechapel Mission
Race 01 No. 26112
Tony.Hughes@whitechapel.org.uk

Daycentre

practical support in helping people who are homeless with food, clothing, showers advice and counselling
020 7247 8280
daycentre@whitechapel.org.uk

Lifskills Centre

exiting lives programme - to equip people with the skills to sustain a tenancy and to get back to work
020 7392 2715
lifskills@whitechapel.org.uk

Education Centre

citizenship programme showing the effects of drugs and alcohol on real lives whilst gaining a knowledge of poverty, deprivation and exclusion
020 7392 2702
education@whitechapel.org.uk

Whitechapel House

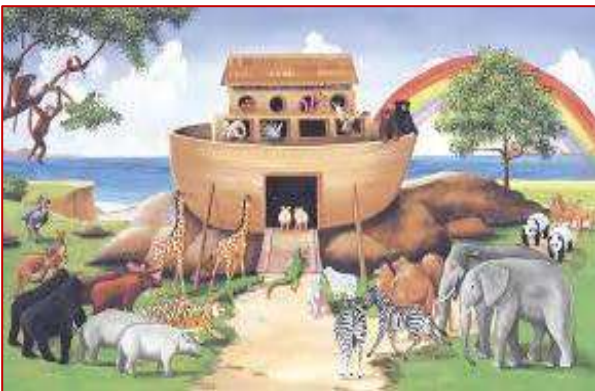
residential project offering affordable housing to London's key workers



Messy Church at New Eltham continues to be popular, with many families attending regularly and, at the last session, we had 26 children! We are very grateful to Sharon for doing the catering for us and to our other regular and occasional helpers.

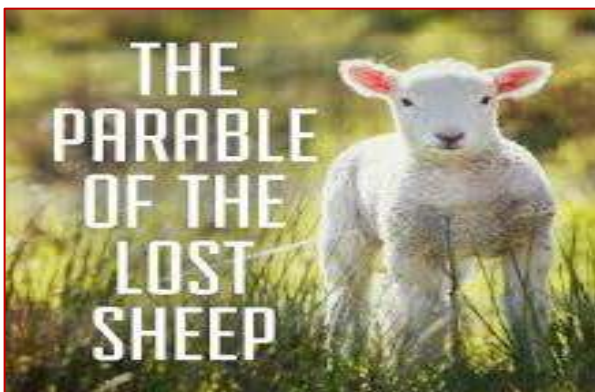
Our next sessions are as follows.

Saturday 21st April from 4pm to 6pm



**Join us to hear the Story of
Noah's Ark
and make some fun crafts.**

Saturday 19th May from 4pm to 6pm



**Join us to hear the Parable of the
Lost Sheep
and make some fun crafts.**

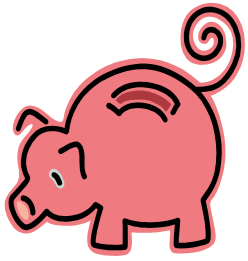
Each session ends with a family tea

For further information please email: church@newelthammethodist.co.uk
or telephone 020 8859 4932

FREE ENTRY

Messy Church is supported by New Eltham Methodist Church although any donations on the door are gratefully received to support our craft activities.

REPORTS FROM COMMITTEES



FINANCE UPDATE

The finance report I presented to February's Church Council was a mixture of good news and not such good news. The good news was that offerings are expected to be somewhat higher this year than previously estimated. The less good news is that we are still likely to end the year in deficit (we have lost a large individual contributor) as opposed to last year, which ended with a £10,000 surplus. I did highlight the likelihood of a deficit for 2017/18 at the October Church Council meeting and asked members to consider this when setting their offertory level for the year. It is pleasing to see that members have responded though, sadly, not by enough to enable us to cover our costs.

The Circuit assessments for 2018/19 were agreed at the last Circuit meeting and our allocation for 2018/19 will be less than in 2017/18, because of the reduction in ministerial staff and the decision of the Circuit to rent out their surplus manses rather than sell them. I am hopeful that this will enable us to return to surplus. We have received a donation of £6,500, which has been allocated to the Growing Community Fund, and the transfer from NECP of £8,500, which I told the Council was imminent has now been received and also allocated there. This takes the Growing Community Fund to nearly £92,000 and means we can make a start on our refurbishment as soon as we are ready.

My thanks as always to the stewards who collect and record our offerings and to Jane for all her help with administration.

Chris Field



REFURBISHMENT UPDATE

Following meetings between Michael, Steve and Duncan and the managing director and development manager of Bellmay and subsequent revisions to their prices, we have appointed Bellmay as the lead contractor for the Centre refurbishment. Bellmay are based in Westerham and have experience of a wide variety of builds and conversions, including the construction of new toilets for Leeds Castle, which as you might imagine needed to be both functional and in keeping with their surroundings. We believe they are more than capable of delivering of our project and have promised a flexible approach which fully reflects our need to keep the Centre open.

We have agreed a fixed price design and construct contract, based on a staged delivery process. This should minimise the impact on Centre users and on Centre lettings/income and see the refurbishment delivered in five discrete stages. These are broadly described below and together they aggregate to £293,950 including VAT.

A new combined entrance for the Church and Centre, including repositioning the staircase to the flat and removing the cloakroom and front lobby	£ 66,500
A new coffee bar, including relocating the Church office to an improved location and making the kitchen more practical and more accessible	£ 41,500
Increasing the capacity of the ladies' toilet, building new children's and disabled toilets and replacing plumbing and sanitary ware in all toilets	£ 56,500
The refurbishment of the hall, including new lighting, a new suspended ceiling and conversion of the disused oil store into a storage room	£ 62,300
The replacement of the deteriorating stage, including a new side extension, ramped access at the rear and a new scenery store outside the hall	£ 46,400
Providing for a full range of audio visual facilities in the hall, including radio microphones, sound enhancement, induction loop and AV projection	£ 21,000

Since receiving the contract, Bellmay have appointed architects and structural engineers to undertake the detailed surveying and planning work that is necessary for the preparation of the architectural plans, which we will need for local authority planning permission, Methodist Church building approval and for our funding applications to the Circuit and other funders.

The timing of the project is of keen interest to everyone and, especially, Jane, but until we receive the reports from our architects and structural engineers, it is impossible to be precise. We have set out our intention to deliver the project in stages and have asked Bellmay to propose what they think is the most sensible sequence. They have said that securing planning permission for the external works could take 6/9 months and have suggested that we start with the refurbishment of the toilets and the realignment of the coffee bar, including moving the office, while we wait for approval for the exterior. We will be bringing a detailed proposal to the AGM.

We presented our refurbishment proposals to the Circuit meeting on 8th March and the Circuit has given us approval to proceed, though not yet any money! Michael has since met with the Circuit Treasurer to explore how financial assistance might be given. We are now developing a fundraising plan that links aspects of the project with identifiable groups (children, older people, the mobility impaired) or specific activities (sport, drama, education, community engagement, isolation and exclusion) which will help us identify the funders willing to finance them. The Methodist Church has produced a useful guide for churches undertaking our sort of scheme, which includes a long list of charitable trusts and companies who have funded projects like ours in the past. We will be using this as our starting point but, if any Church member or Centre user has any ideas of other funders who may be amenable, we would be delighted to hear from them.

Given the money already at our disposal, we would hope to begin the first stage of the project very soon and will keep Church members and Centre users informed of our progress through regular updates in the Church magazine, with fuller updates at Council meetings and the Church AGM.

Michael Chuter



PROPERTY UPDATE

There have not been any major repairs required so far this year, but we have been continuing with minor plumbing repairs and ongoing maintenance. The annual emergency lighting test and fire extinguisher servicing are both in hand. A new hand drier has been fitted in the disabled toilet and, if successful, these will be put in the ladies toilets when they are refurbished. The church noticeboard has also been replaced, as the old one was leaking and damaging the posters, and we have begun to install the long awaited blinds in the church. Unfortunately our rostrum and balcony are making access difficult and the installer has, so far, only installed the ones that could be reached from a scaffold tower. The others will be installed very soon.

The CCTV camera covering the church is now in operation, and we continue to monitor security measures. Following reports of youths climbing on the roof, additional external lighting and cameras on the car park side of the church are being installed.

Bookings continue to run satisfactorily and licences have been issued to all hirers. Rents have been held at the same rates as last year. Generally no issues have been reported, other than congestion in the centre at the Saturday afternoon pantomime performance, due to a crossover with the All the Arts. It is suggested that next year All the Arts are asked to clear the premises before the panto people arrive to avoid any clash and also to ease the parking.

As always we are very grateful to Graham and Steve for the time they put into maintaining the building and grounds.

Julie Gardner



Worship Leaders

The Worship Leaders would like to thank everyone who joined us on a cold February evening for our service of hope, in which we shared the testimonies of those whose faith in hope had been severely tested but who, nevertheless, were able to confront their trials in faith and view their future with optimism. We hope all who attended were comforted and encouraged by their example.

Our next evening service will be on **Sunday 29th April at 6:00pm** and will be a service of reflection and recollection, in which we will share our personal experiences of the Holy Spirit and celebrate God's work in all its many forms. Members of the congregation will be welcome to participate as much or as little as they wish, but we hope everyone will want to join us for this exploration of faith and devotion.

Over the past few months we have been meeting as a group to reflect on our contribution to the life of the Church and how, in the light of the forthcoming reduction in the number of Circuit Ministers, we might lighten the burdens on the ministry team. It is almost six years since we first came together and we are presently delivering three services each quarter. Whilst this has clearly helped to reduce the pressure on ministers and local preachers, we have also tried to introduce a degree of variety in content and presentation.

While a traditional 'hymn sandwich' service is popular with many in our congregation, if we are to attract more people to our Church and who don't come now, we need to appeal to them by varying the services we provide for example by offering more contemplative, participative, music, drama or prayer centred services in the future.

The facilities we now have in terms of staging and technology give us many more opportunities to make services more experimental and varied. Duncan has even suggested broadcasting sermons by video link, which is nothing like as implausible as it sounds and we certainly think we can make better use of the scripture resources now available online to make our services accessible to a wider range of participants.

We are also considering varying the times at which we offer services. We already do afternoon services (starting at 4pm) in the winter and evening services (starting at 6pm) in the summer and some feedback on these would help our thinking.

If the purpose of offering a variety of service styles is to increase Church attendance, it follows that we must do more to promote them. We are developing an annual calendar of themes and styles of worship and are planning to advertise them well in advance via the Church magazine, by e-mail and in other ways so people know roughly what to expect before they come. The reconstruction of the Centre gives us an opportunity to develop a new marketing strategy and to advertise our services to the hundreds of people that wait inside and outside the centre and potentially to the slow moving traffic outside our Church. The leaflet that Jane uses to advertise the Centre's activities will be expanded to include Church Services and will describe the various themes that we plan to use. These can be spread throughout all the groups that use our premises thus reaching many hundreds of people and families.

We have also spent some time considering the style and delivery of our all age worship services as, with the reduction in the Ministry, this is a risk that these might lose some of their focus. We also want to explore how we can better link our all age services to the Circuit's objectives alongside those of the Impact Group, Messy Church and Film Club. We have decided that, while our central themes should be relevant to the Lectionary, we want the services to be more inclusive and contain points of worship relevant to all the ages present. For example; if small children are to work with craft activities, they should be complementary and integral to the service as a whole not just something to keep them quiet while we get on with our adult service.

This is of course a continuing process of development and no doubt mistakes will be made along the way. However we are anxious to ensure we have the confidence and support of the Church Family in what we try to do, even though it may be sometimes not what you all want in a Service. We will be discussing our ideas at the Church AGM and invite feedback from the Church Family as to which ideas they feel most comfortable with and which would appeal to the widest range of ages and to all sections of the community.

Worship is a vital part of our mission and must be continually reviewed and improved as we go forward. We hope the whole Church Family will want to join us on our journey.

Steve Offord



JIGSAW CHALLENGE



We have many 500 - 2000 piece jigsaws just waiting to be completed.

Have you the wish to meet others for a social afternoon?

You can start on your own, or have someone join you to help!

We store your puzzle between sessions, so you may spend several weeks on finishing it, if you would like to.

We meet at 2.00 pm. on the 2nd and 4th Monday each month at the Methodist Centre, 435 Footscray Road, SE9 3UL.

Refreshments are provided and you will meet new friends in a warm, well lit room at the back of 'The Centre'.

We only ask for £1.50 towards our costs each session.

WHY NOT JOIN US?

Come and introduce yourself. Bring a friend.

Mondays in March 12th, 26th & April 9th, 23rd 2018.





Film Nights

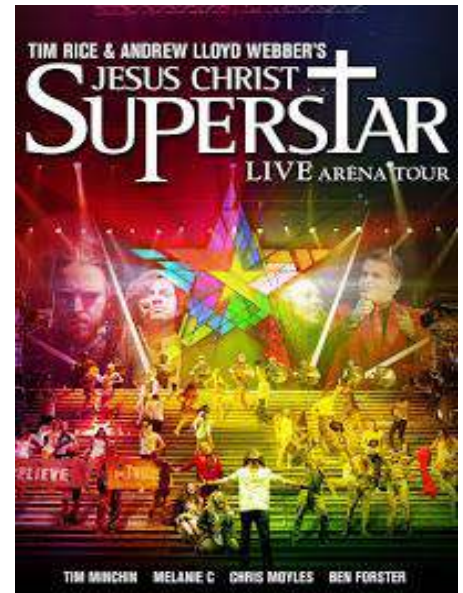
@ New Eltham Methodist Church

Jesus Christ Superstar

Wednesday 11th April 2018 at 7pm

As a swansong for Easter, come and be amazed by this rock musical version of the Passion Play which tells the story of the last seven days in the life of Jesus from the point of view of Judas, the betrayer. The show is from the 2012 live UK arena tour, with Tim Minchin as Judas, Ben Forster as Jesus, Chris Moyles as Herod and Melanie C as Mary Magdalene. The original 1970's play with songs written by Tim Rice and Andrew Lloyd Webber, has been updated to bring the story into the 21st century, using footage from the Occupy movements' riots in London to create a contemporary backdrop for the rise of a new political leader who threatens the status quo of capitalism and state authority. It brings a fresh perspective to the passion narrative as you are invited to engage with the characters in a new way.

Running time 1hr 47m.



Quartet

Wednesday 9th May 2018 at 7pm

Quartet is a wickedly comic film about redefining old age and growing old with hope. Directed by Dustin Hoffman with a stellar cast including Maggie Smith, Michael Gambon, Tom Courtenay and Pauline Collins, it tells an engagingly funny story of life in a genteel home for retired musicians. Old friends Wilf and Reggie together with former colleague Cissy, are residents of Beecham House, and every year on Giuseppe Verdi's birthday, the residents unite to give a fundraising concert. But when Jean Horton, Reggie's ex-wife, and grande dame of the opera, unexpectedly joins them in the home, the plans for this year's concert start to unravel. As old grudges threaten to undermine past glories and theatrical temperaments play havoc with the rehearsal schedule, it becomes apparent that having four of the finest singers in English operatic history under one roof offers no guarantee that the show will go on. It's a laugh out loud film that celebrates growing old disgracefully!

Running time 1hr 34m.



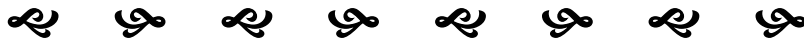
All welcome. The films are followed by a short discussion and light refreshments.

The films are free, but there is a small charge of £1 for refreshments. Bring a friend!

Floristry Classes



A floristry class has recently started meeting at the Centre. It is an opportunity to come along and learn how to make various styles of floral displays. All flowers and equipment are provided and you can take your floral display home with you. Elaine, who takes the class, has kindly been donating her flower display to the Church each week and pictured is a lovely hand-tied display the class made in March. The next class is on 12th April at 12.30 pm. For more details and to book a class contact Elaine Kelly on 07957 422 763.



'Patience' by Gilbert & Sullivan

26th - 28th April 2018

NECP invite you to our April Musical, the delightful comic operetta "Patience" by Gilbert & Sullivan, first performed by us 43 years ago! Although written in Victorian times, its theme of the foolishness of celebrity/hero worship is so relevant to today's society that we felt it was a very apt choice. If you are not familiar with the plot, here is a brief summary:-

At Castle Bunthorne all of the maidens in the village are besotted with Reginald Bunthorne, a moody and handsome poet, but he has eyes only for the simple milkmaid, Patience. The problem? Bunthorne's artistic ways are all just an act to attract women to him - he doesn't even like poetry! Besides, Patience is in love with her childhood sweetheart, who happens to be a real poet named Archibald Grosvenor, but feels she cannot marry him because he is just too perfect. In the meantime the serious (and decidedly non-poetic) platoon of Heavy Dragoon Guards, who were meant to marry the village maidens, find themselves dismayed and perplexed by their sudden loss of prospects and are determined to win the maidens back. It's a story of love, superficiality and vanity, which is witty and has many laugh out loud moments.

Come along and see us perform one of Gilbert & Sullivan's most successful shows and find out just who will be Bunthorne's Bride? Ring Rachel to book your tickets on 020 8851 9881 or book online via our website www.necp.org.uk (booking fee applies).

Any volunteers willing to help out on Coffee Bar for any of the performances would be very welcome - just sign up on the coffee bar notice and Thank You!



NEW ELTHAM COMMUNITY PRODUCTIONS
PROUDLY PRESENTS:



PATIENCE

BY GILBERT AND SULLIVAN

THURSDAY 26TH / FRIDAY 27TH

SATURDAY 28TH APRIL

7:30 PM

MATINEE SATURDAY 28TH APRIL

3:00 PM

TICKETS : £12

CALL :020 8851 9881

BOOK ONLINE VIA WWW.NECP.ORG.UK

(BOOKING FEE APPLIES)

THE CENTRE, NEW ELTHAM METHODIST CHURCH, 435-439 FOOTSCRAY ROAD, SE9 3UL



NECPNEWELTHAM@YAHOO.CO.UK



[@NECPNEWELTHAM](https://twitter.com/NECPNEWELTHAM)



[FACEBOOK.COM/NECPNEWELTHAM](https://facebook.com/NECPNEWELTHAM)

Regular Events

CONTACT NUMBERS

Sundays	10:30	Morning Service Young Church (5-18 years)	020 8857 3786 020 8859 9750
	12:30	British Zimbabwe Methodist Fellowship	07867 525 715
Mondays	10:00	Diddie Dance (2-4 years)	07803 531 782
	11:15	Ready, Steady, Toddle! (18 months - 4 years)	07771 747 219
	14:00	Jigsaw Group (2nd and 4th Mondays of the month)	07810 201 818
	17:30	Okinawa Shotokan Karate Academy	07723 535 353
	19:30	Senior Youth Club (11-19 years)	020 8859 4932
Tuesdays	14:00	Adult Social and Activity Group	020 8302 6829
	16:00	Tanya Dirrane School of Irish Dancing (over 4s)	07775 943 723
	16:45	Loopy Lou's Cheerleading, Hip Hop and Street Dance (4-7 years)	07967 346 797
	18:00	Loopy Lou's Cheerleading, Hip Hop and Street Dance (8+ years)	07967 346 797
	20:00	Yoga Lily	07776 205 301
	20:00	New Eltham Community Productions	020 8300 9027
Wednesdays	07:00	Weight Watchers	07880 617 066
	10:00	Pilates Energy	07488 238 571
	14:00	Badminton - non league	020 8850 7621
	17:30	3rd New Eltham Rainbows	020 8300 9027
	18:00	2nd New Eltham Brownies	01322 401 891
	19:30	2nd New Eltham Guides	020 8850 2346
	20:00	2nd New Eltham Rangers (Fortnightly)	020 8850 2346
	20:00	Zumba	07811 823 467
Thursdays	11:00	Barre Concept	07769 942 869
	12:30	Floristry Classes with Elaine	07957 422 763
	14:00	Sidcup Active Retirement Association (3 rd Thursday of the month)	07738 947 860
	18:00	Key to Success 11+ Tutoring	07896 114 044
	20:00	Badminton - non league	020 8859 5856
	20:00	New Eltham Community Productions	020 8300 9027
Fridays	11:15	Pilates Energy	07488 238 571
	14:00	Sidcup Active Retirement Association	020 8302 7182
	16:15	All the Arts Theatre School (3-17 years)	020 8850 2384
Saturdays	08:30	Weight Watchers	07880 617 066
	10:00	All the Arts Performers Academy	020 8850 2384

For further details, see our website: newelthammethodist.org.uk



The Summer magazine's editor is Andrew Seed
Items for insertion to Andrew by Sunday 27th May
at the latest please. andrew_seed60@hotmail.com